

FIG.1

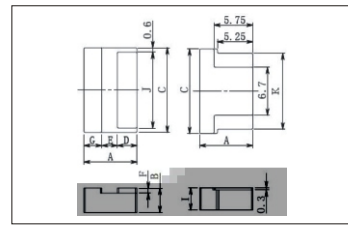


FIG.2

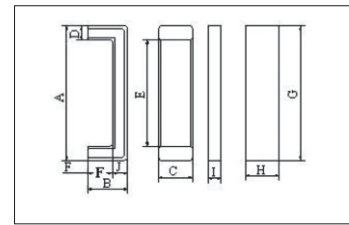


FIG.3

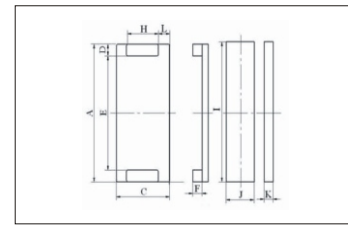
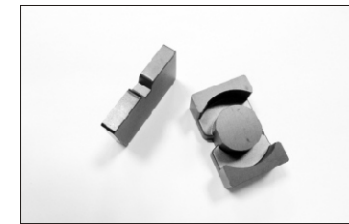
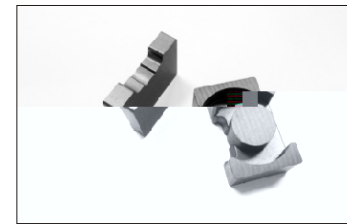
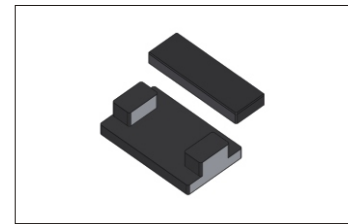


FIG.4

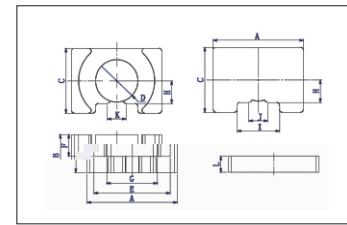


FIG.5

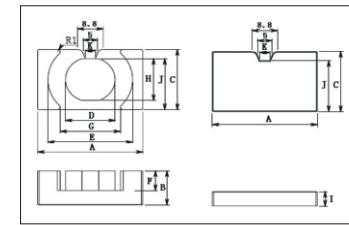


FIG.6

**CI 型 / CI Core**

型号 TYPE	图例 FIG.	尺寸 Dimensions ( mm )																		
		A	B	C																
CI7.7/6.8/9.2A																				
CI7.9/6.5/11.8																				
CI11.2/9.5C																				
CI29/10G																				
CI33/32																				
CI48.5/28																				
ECI32/19.5/23																				
ECI36/19.5/23A																				