

FIG.2

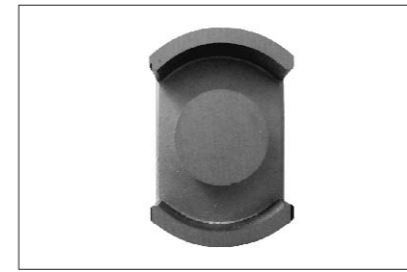
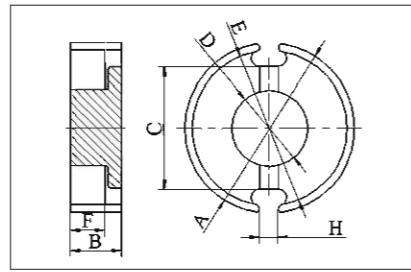
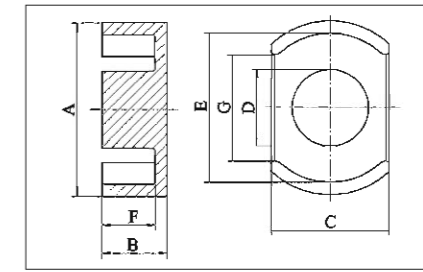


FIG.3



**P 型 / P Core**

型号 TYPE	图例 FIG.	尺寸 Dimensions ( mm )						
		A	B	C	D	E	F	G
P33.2/18.9/23.7C	3	33.2±0.5	9.45±0.1	23.7±0.3	13.5±0.2	26.6±0.4	6.45+0.2/-0.1	19.5±0.5
P33.2/19E	3	33.2±0.5	9.4±0.15	23.7±0.3	13.5±0.2	26.6±0.4	6.7±0.15	18.35±0.4
P33.3/18A	3	33.3±0.4	9.2±0.1	24±0.3	13.8±0.2	26.8±0.4	6.2±0.1	17.2min
P33.5/12.6/24A	3	33.5±0.4	6.3±0.2	24±0.3	13.8±0.25	26.8min	3.55±0.2	17.2min
P33.5/12S	3	33.5±0.4	6.1±0.2	24±0.3	13.85±0.25	27.2min	3.35±0.2	
P33.5/13.1/24	3	33.5±0.4	9.5±0.15	24±0.3	13.85±0.25	26.7min	6.5±0.15	
P33.5/13.3/24A	3	33.5±0.4	9.7±0.2	24±0.3	13.85±0.25	26.5min	6.75±0.25	17.2min
P33.5/13.6A	3	33.5±0.4	6.8±0.2	24±0.3	13.8±0.2	26.8min	3.9±0.2	
P33.5/13.9/24B	3	33.5±0.4	6.95±0.2	24±0.3	13.8±0.1/-0.2	27.5±0.4	3.95±0.2	18.2min
P33.5/13/24A	3	33.5±0.3/-0.5	6.5±0.1	24±0.3	13.85±0.25	26.8min		17min
P33.5/14C	3	33.5±0.4	7.15±0.2	24±0.3	13.8±0.2	26.8min	4.15±0.2	17.2min
P33.5/16.2/24A	3	33.5±0.3	8.1±0.2	24±0.3	13.85±0.25	26.8min	5.1±0.2	18.5min
P33.5/19L	3	33.5±0.4	9.7±0.2	24.0±0.3	13.8±0.2	26.8min	6.7±0.25	17.2min
P33.5/19S	3	33.5±0.4	9.7±0.1	24.0±0.3	13.8±0.2	26.8min	6.7±0.2/-0.1	17.3min
P33.5/25D	3	33.5±0.3/-0.5	12.5±0.1	24.0±0.3	13.85±0.25	27±0.3/-0.5	9.5±0.1	17min
P33.5/28/24A	3	33.5±0.5	14±0.1	24±0.45	13.7±0.25	26.8min	11±0.15	17min
P35/22C	2	35.6±0.6	10.9±0.2	26.2±0.6	15.9±0.3	29.5min	7.6±0.3	5.45±0.25
P36/22G	2	36±0/-1.	10.7±0.4/±0.	26.2±1	16±0/±1	29.5±1.8/±0.	7.8±0.3/-0.	5.4±0.4

C1	Ae	Le	Amin	Ve	AL(±25%)				重量 g /PRS
					TP4	TP4A	TP4W	TPW33	
0.32	154.72	48.85	134.13	7557.5	5900	6100	7200	7700	39.22
0.33	148.56	48.82	128.82	7252.7	5700	5900	6900	7400	37.64
0.30	160.12	48.07	139.82	7697	6200	6500	7600	8100	39.94
0.26	149.45	38.23	134.40	5714.1	7100	7300	8500	9000	29.65
0.26	146.89	38.00	134.40	5582	7100	7300	8500	9100	28.97
0.23	167.24	38.28	147.12	6401.4	7800	8000	9300	9900	33.22
0.25	158.84	38.93	140.05	6184	7300	7500	8800	9300	30.00
0.26	153.86	40.04	137.65	6161	7000	7300	8500	9000	31.97
0.26	154.97	40.74	139.04	6312.9	7000	7200	8400	9000	32.76
0.25	157.34	38.76	140.59	6097.9	7400	7600	8800	9400	31.65
0.26	157.49	41.08	139.82	6469.8	7000	7200	8400	9000	33.58
0.28	158.56	44.51	140.59	7057.7	6700	6900	8000	8600	36.63
0.39	150.25	57.80		8684.93	5800	6000	7100	7700	45.07
0.32	158.67	50.37	139.82	7992.7	6000	6200	7380	7800	41.48
0.37	167.29	61.08	147.15	10218.6	5500	5600	6700	7200	53.03
0.42	160.15	66.58	140.59	10662.8	4900	5000	6000	6500	55.33
0.28	186.66	53.00	164.84	9892.4	6800	7100	8300	8900	51.34
0.31	173.81	54.00	143.55	9285.2	6000	6100	7200	7700	48.70

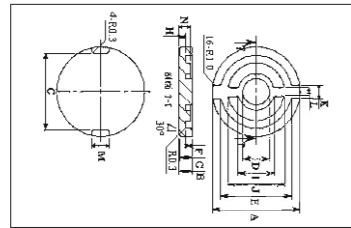
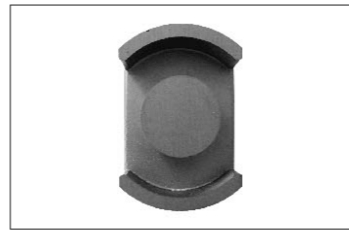
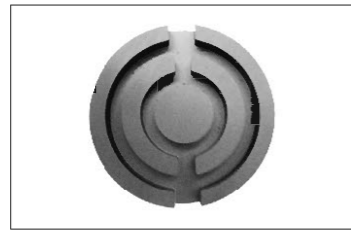


FIG.1

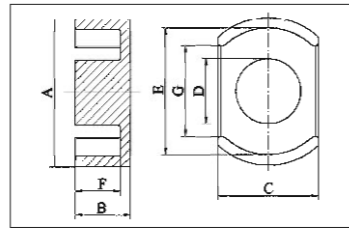


FIG.3

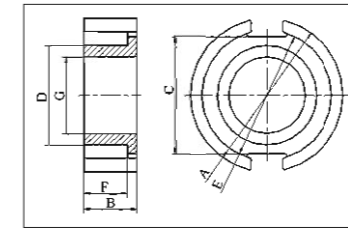
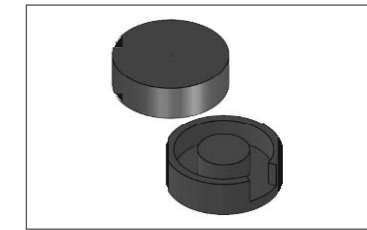
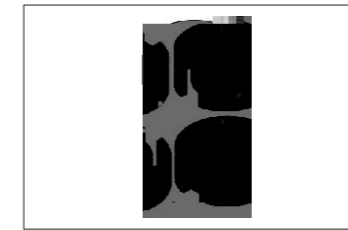


FIG.5

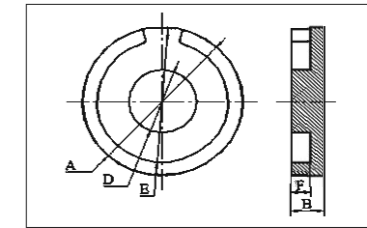


FIG.8

P型 / P Core

型号 TYPE	图例 FIG.	尺寸 Dimensions ( mm )						
		A	B	C	D	E	F	G
P39.8/25.2/28.3	3	39.8±0.7	12.6±0.15	28.3±0.4	16±0.3	33.3±0.7	9.05±0.2	
P40/13D	3	39.8±0.5	6.75±0.1	28.3±0.35	16±0.35	33.2±0.5	4.35±0.15	20min
P40/17.8	3	39.8±0.5	8.9±0.1	28.3±0.35	16±0.25	33.2±0.5	5.9±0.15	20min
P40/21B	3	39.8±0.7	10.3±0.2	28.3±0.5	16±0.25	32.7min	6.6±0.2	20min
P40/22.2/28.4	3	39.8+0.7/-0.4	13.45±0.1	28.3+0.5/-0.4	16±0.3	33min	9.85±0.15	
P40/10	8	40±0.5	5+0/-0.2		17.7±0.4	35.4±0.4	3±0.2	
P40/13G	3	40±0.5	6.6±0.2	28.3±0.35	16±0.25	33±0.5	3.6±0.2	
P40/25A	3	40.0±0.5	12.7±0.15	28.3±0.4	16.0±0.3	33.3±0.5	9.15±0.2	
P40/26A	3	40.0±0.5	13.2±0.2	28.3±0.4	16.0±0.3	33.3±0.5	9.7±0.2	
P40/27	3	40.0±0.5	13.5±0.2	28.3±0.4	16.0±0.3	33.3±0.5	9.9±0.2	
P40/25F	3	40.3±0.6	12.7±0.15	28.4±0.4	16.1±0.3	33.3min	9.15±0.2	20.5min
P51/35A	5	50.8±1	17.8+0/-0.5	39±1	33±1	43.2+1/-0.5	14.5±0.5	25.5+0.2/-0.3
P57/17A	1	57±1	8.5±0.15		18±0.35	47.2±0.95	5±0.2	

C1	Ae	Le	Amin	Ve	AL(±25%)				重量 g /PRS
					TP4	TP4A	TP4W	TPW33	
0.31	209.32	65.24	189.75	13655	6700	6900	8200	8900	70.86
0.27	161.45	43.55	160.85	7030.8	7700	8000	9300	10000	36.49
0.27	191.02	51.78	175.93	9891.8	7400	7700	9100	9700	51.33
0.27	211.71	56.62	193.52	11987.7	7600	7900	9400	10000	62.21
0.28	209.67	59.70	191.01	12517.5	7200	7500	8900	9500	64.96
0.23	159.82	35.96	105.65	5747.4	5800	6000	6900	7400	29.83
0.23	189.55	43.27	175.93	8201.3	8500	8800	10300	10900	42.56
0.31	210.69	65.52	189.75	13803.6	6700	6900	8200	8800	71.63
0.32	209.70	67.40	188.50	14137.7	6500	6700	8000	8600	73.37
0.39	198.38	77.69		15411.75	6100	6300	7500	8100	79.98
0.31	209.25	66.15	191.57	13841.7	6700	6900	8200	8900	71.83
0.22	353.68	76.28	316.20	26976.9	9800	10200	12200	13100	140.00
			254.47						